

BAD WILDBAD

Bad Wildbad is a famous spa town in the Black Forest in Southwestern Germany. Numerous natural hot springs with 37 - 42°C temperature surface there. Since the middle ages, these hot springs are used for curing diseases. Today, several spas such as Palais Thermal and Vital Therme serve the guest's health.

Located in the Enz valley between two chains of Black-Forest mountains, Bad Wildbad offers a fascinating landscape with mountains, steep slopes, hill moors, natural springs, creeks, rivers and huge forests. They offer numerous hikes, bike rides and skiing opportunities in winter.

CONFERENCE VENUE

The former spa house "König-Karls-Bad" built in 1884-1888 has been remodeled into a conference center with historical and museal rooms. It is located right downtown, adjacent to the terminal stop of the S train.

Forum König-Karls-Bad
(Haus des Gastes)
König-Karl-Str. 3
75323 Bad Wildbad
Germany



REACHING BAD WILDBAD

You will reach Bad Wildbad by plane from the airports of Frankfurt or Stuttgart using the train via Pforzheim. By car you reach Bad Wildbad from Pforzheim via B 294.

HOTEL ACCOMMODATION

The following hotels offer special rates for the conference:

- Mokni's Spa Hotel ****
- Hotel Sonnenhof ***S
- Hotel Weingärtner ***S
- Hotel Alte Linde ***

These rates are valid through August, 31, 2015. All hotels are in walking distance from the conference venue.

Conference
MNB
MODELING
NATURAL BARRIERS
Sept. 28 - Oct 1, 2015



Workshops on
MODELING
STORAGE IN DEEP LAYERS
AND
THE SKIN BARRIER

FORUM KÖNIG-KARLS-BAD
75323 BAD WILDBAD
GERMANY

WORKSHOP MODELING STORAGE IN DEEP LAYERS Mo., SEPT. 28, 2015

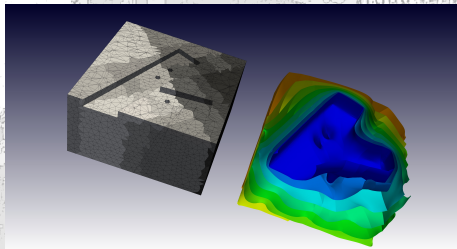
- CO₂ sequestration
- Waste disposals in deep geological layers.
- Multiscale modeling,
- Numerical methods,
- Adaptivity,
- Flexible and reliable discretizations,
- Fast and robust multigrid methods,
- High performance computing.

INVITED SPEAKERS (tentative)

Vladimir Cvetkovic (Stockholm),
Alfio Grillo (Torino),
Michael Resch (Stuttgart),
Mary Wheeler (Austin).

ORGANIZERS

Sabine Attinger, Jörg Mönig, Arne Nägel,
Anke Schneider, Gabriel Wittum, Jens Wolf



Arne Nägel, Dmitrij Logaschenko, Sebastian Reiter,
G-CSC, Universität Frankfurt

WORKSHOP MODELING THE BARRIER FUNCTION OF HUMAN SKIN SEPT 29 - OCT 1, 2015

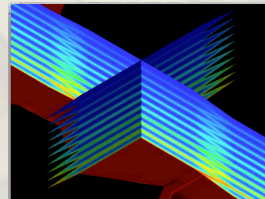
- Detailed skin models
- Modelling and simulation
of skin penetration
- Sorption
- Metabolism
- Copermeation
- Imaging and morphology reconstruction

INVITED SPEAKERS (tentative)

Joke Bouwstra (Leijden),
Johanna Brandner (Hamburg),
David Keyes (KAUST),
Johannes M. Nitsche (Buffalo),
Reinhard Neubert (Halle),
Lars Norlen (Stockholm),
Roger Wepf (Zürich),

ORGANIZERS

Matthias Bolten, Michael Heisig,
Arne Nägel, Gabriel Wittum, Felix Wolf



Arne Nägel, G-CSC, Uni Frankfurt

CONTRIBUTIONS

in form of lectures and posters are welcome.
To contribute, please send title and a pdf-file of your
talk and/or a poster abstract resp. to
conference@techsim.info
by **July 15, 2015**.
Notice of acceptance by August 1, 2015.
Exhibition space is available on request.

PROCEEDINGS

will be published as special volume of Computing
and Visualization in Science.

REGISTRATION

Participants from academic institutions:
Whole conference: 450,-€
Workshop Storage in Deep Layers: 150,- €
Workshop Modeling the Skin Barrier: 350,- €

Participants from industry:
Whole conference: 700,-€
Workshop Storage in Deep Layers: 200,- €
Workshop Modeling the Skin Barrier: 600,- €

Registration later than **August 15, 2015**:
100,- € additional fee per person

Conference fee includes admission to all sessions,
free coffeebreaks, conference dinner and collection of
abstracts.

SPONSORS

BMBF via the H-DuR-project,
DFG via 

TechSim UG

G-CSC
Goethe-Universität Frankfurt

